

KR 950 Compensating Stacker

Sorts and stacks catalogues, newspapers and booklets

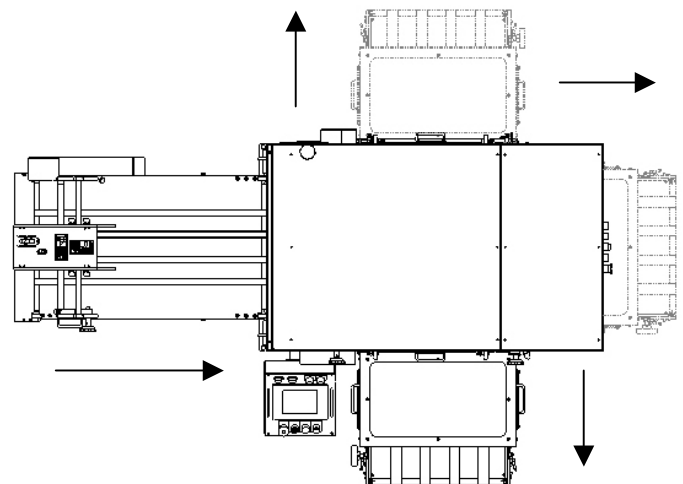


Stack a wide range of product efficiently and conveniently with the KR 950 Compensating Stacker. The KR 950 is a combination of the latest technology and new, innovative features that allow you to use it throughout your facility on binders, inserters and mail bases.

The KR 950 adjusts quickly and easily to accommodate a wide range of material from small 5" x 7" books up to full size newspapers. Stack integrity is maintained using joggers and a receding lift table to minimize the stack-drop distance.

The unique design of the KR 950 allows you to configure it to match your space requirements. Stacks exit right, left or straight thru based on the position of the exit conveyor with no sacrifice in throughput. Changeover between exit positions is quick and easy.

The versatility of the KR 950 separates it from the competition. Invest in the KR 950 and find out how a little versatility can make a big difference in your productivity.



A wide product size range and the ability to deliver stacks inline, to the right or left make the KR 950 one of the most versatile stackers on the market.

KR 950 Compensating Stacker

General Specifications

Physical

Length	96"
Height	86"
Width	60"

Electrical Requirements

Voltage	220 VAC
Current	30 amps
Phase	single
Hertz	60

Compressed Air Requirements

80 psi @ 3 cfm

Production Rate 18,500 ppm

Material Handling

Min stock size	4.5" x 6"
Max stock size	18" x 18"

Minimum stock thickness	single sheet
Maximum stock thickness	2.5"

Features

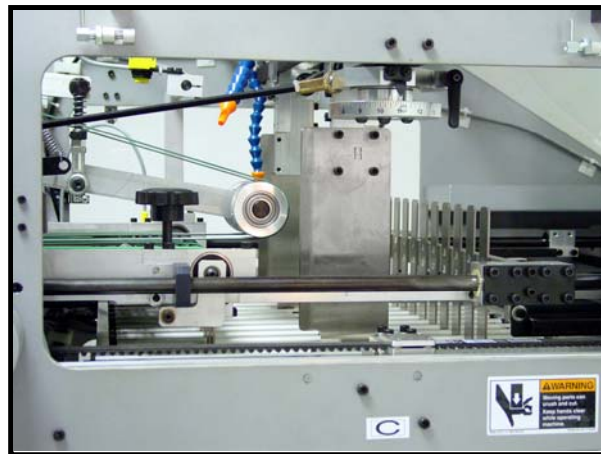
In feed divert
Color touch screen interface
Variable speed DC motor
Servo drive turn table with integrated pusher and lift table
Front and side joggers

Options

Static bars
Hydraulic lift kit
Additional outfeed conveyors
Base alignment slide

Your Kirk-Rudy dealer is:

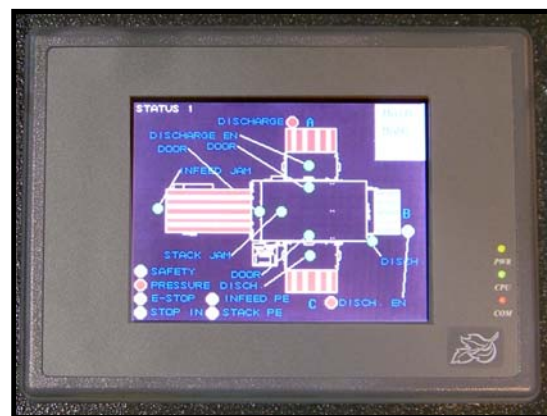
*Specifications subject to change without notice
Guards removed for clarity*



Heavy-duty construction makes the KR 950 suited for bindery lines, newspaper inserters and mailshops.



The receding lift table helps maintain stack integrity by minimizing the distance stacks drop between compensation cycles.



The control panel's graphical display indicates system status simplifying setup and maintenance.